

bimos

SADDLE STOOL



WHERE WORK IS ELEVATED AND THERE IS A LOT OF MOVEMENT, IT DOES ITS JOB.

Our saddle stool is ideal for elevated workstations, especially where mobility is required or legroom is limited.

Thanks to its specific optional features, the saddle stool is ideally suited for different areas of use.



Bimos is Europe's leading manufacturer of the best industrial and laboratory chairs. For over sixty years, using our specialist knowledge, technical expertise and dedication, we have been ensuring that seating keeps people productive, healthy and happy at every workplace.

IDEALLY EQUIPPED

A STOOL FOR EVERY TASK

How good a seating solution is depends on how seamlessly it fits into its areas of use. The saddle stool is ideally equipped for any task.

High workstations. Outstanding mobility and legroom even in confined spaces

Industry. Robust, easy to clean, plastic base

ESD. Volume-conductive, ESD castors, reliable overall discharge

Laboratory/medical. Resistant to disinfectants, hygienic design, aluminium base

Cleanroom. Encapsulated mechanism, cleanroom-certified and ESD-compliant

Healthcare. Resistant to disinfectants, hygienic design, maximum mobility

Service sector. Versatile, robust, easy to clean

Office workstations. For high work situations, very mobile, compact dimensions



FEATURES

A STOOL THAT KNOWS WHAT'S IMPORTANT.

Active, dynamic sitting. Intuitive 3D seating dynamics

Pressure equalisation and seating comfort. Three-zone upholstery foam

Choice of upholstery. Artificial leather or Duotec fabric

Comfortable and ergonomic saddle seat. Supports the natural S-shape of the spine

Hygienic design. Crease-free and seamless upholstery; encapsulated mechanism and column cover to prevent the accumulation of dirt and dust

Maximum mobility. Large, smooth-running universal, ESD, laboratory and cleanroom castors

Compact, lightweight and mobile. Space-saving plastic base or aluminium base (dia. 540 mm)

Can be customised to suit the workstation and user. Extralarge seat height range (540–800 mm), infinitely height-adjustable using a hand switch or optional, a particularly hygienic foot release

Always compliant with standards. GS-tested, ESD, cleanroom or laboratory



SADDLE STOOL FOR THE INDUSTRY

A STOOL THAT KNOWS ITS JOB. THE ROBUST INDUSTRIAL STOOL IS MOBILE AND MADE FOR HIGH WORKSTATIONS.

We have developed a robust and flexible saddle stool for the industrial sector. Thanks to its three-zone upholstery foam, it is soft and comfortable. Its extra-large universal castors are smooth-running and easy to clean. The latter applies to the entire stool: Its materials and seamless design make it particularly easy to clean.

The saddle stool enables ergonomic sitting even with frequent changes of position. Thanks to the intuitive seat height adjustment, it can be easily adapted to elevated workstations and different body heights.

Please note. The ESD version discharges electrostatic charges into the floor. Its overall discharge across all components in accordance with DIN EN 61340-5-1 makes the saddle stool safe for electronic workstations.



SADDLE STOOL FOR LABORATORIES

MADE FOR PRECISION. THE SPACE-SAVING STOOL FOR CONCENTRATED AND CLEAN WORKING.

Laboratories are demanding workplaces. The laboratory version of the saddle stool is characterised by its high level of comfort and hygienic design. It is easy to clean, can be disinfected and prevents the build-up of germs and bacteria thanks to its

crease-free and seamless upholstery, as well as the encapsulated mechanism. Its three-zone upholstery foam is soft and makes sitting comfortable. The extralarge laboratory castors are smooth-running and easy to clean.

Please note. The saddle stool is also available as a cleanroom version and is certified to air cleanliness class 3 according to DIN EN ISO 14644-1. It is also ESD-compliant.



SADDLE STOOL FOR THE MEDICAL SECTOR

FOR WHEN YOU NEED TO GET CLOSER: THE HYGIENIC AND COMPACT MEDICAL STOOL.

In the medical sector, it is important to remain mobile and get close to patients. Thanks to its hygienic design, the upholstery is seamless and crease-free. This prevents germs from settling.

The medical stool is easy to clean and can withstand common disinfectants. Its large laboratory castors are smooth-running and easy to clean and its upholstery is soft and comfortable thanks to a three-zone upholstery foam.

Thanks to its design, the saddle stool provides enough space for the legs even in the smallest space.



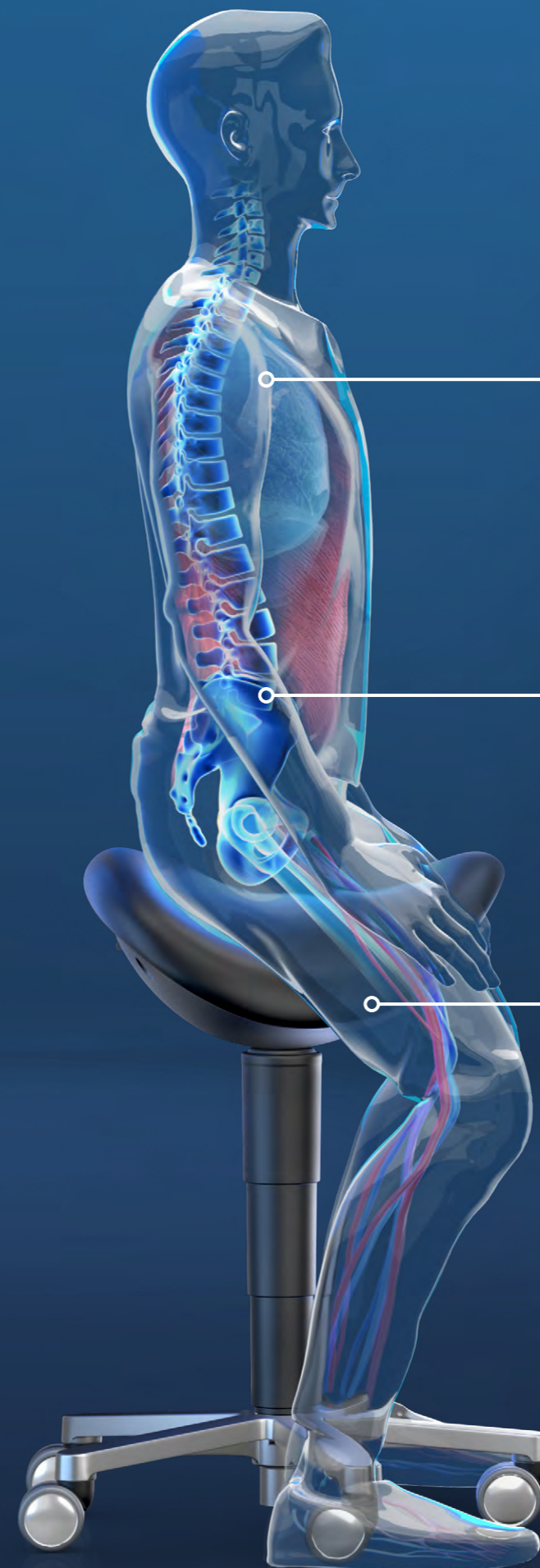
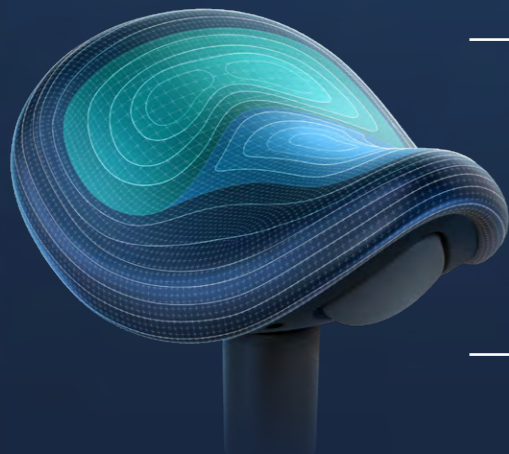
THE SADDLE SHAPE

SUPPORTS THE NATURAL POSTURE.

The saddle shape tilts the pelvis and supports the natural S-shape of the spine. In addition, the 3D seat dynamics actively promotes dynamic sitting.



Three-zone upholstery foam: Soft, comfortable and maximum seating comfort.



Breathing support.
The upright sitting posture can open up the airways and allows you to breathe more freely.

Strengthening the back.
The comfortable saddle seat supports the natural S-shape of the spine and promotes an ergonomic sitting posture.

Active sitting. The sitting position can be easily varied thanks to the 3D seat dynamics. This can prevent tension.

LABORATORY FOR
**MOVEMENT
BIOMECHANICS**

Accompanying development with literature research and study in relation to pressure equalisation and comfort perception.

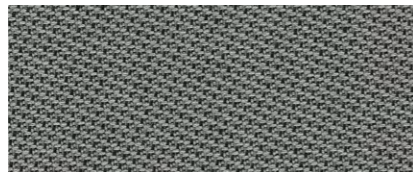
SADDLE STOOL

ALL OPTIONS AT A GLANCE.

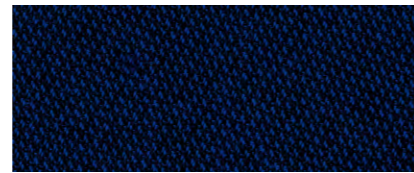
Duotec fabric



black 6801 **black ESD** 9801

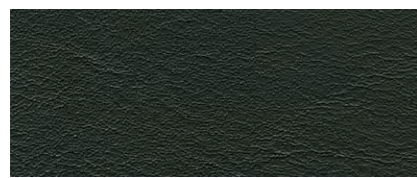


grey 6811 **grey ESD** 9811

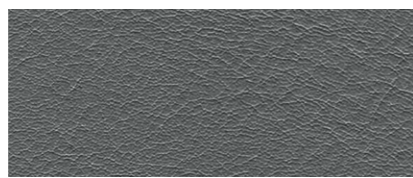


blue 6802 **blue ESD** 9802

Synthetic leather Magic



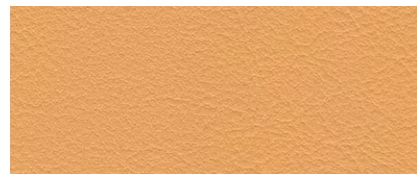
black MG01 **black ESD** MG01



grey MG11



glue MG02



apricot MG76



mint MG84



light beige MG05

Base



Black plastic 217



Polished aluminium 521



Allround **ESD** **Laboratory/medical** **Cleanroom ESD-compliant** **Cleanroom ESD-compliant with foot release**

Saddle stool with castors
Seat height 540-800 mm

Basic equipment/ options	Colour	Order no.	9473	9473 E	9473 L	9473 R	9F73 R
Duotec fabric	Black	6801	<input type="radio"/>	-	-	-	-
	Grey	6811	<input type="radio"/>	-	-	-	-
	Blue	6802	<input type="radio"/>	-	-	-	-
ESD Duotec fabric	Black	9801	-	<input type="radio"/>	-	-	-
	Grey	9811	-	<input type="radio"/>	-	-	-
	Blue	9802	-	<input type="radio"/>	-	-	-
Synthetic leather Magic	Black	MG01	<input type="radio"/>	-	<input type="radio"/>	-	-
	Grey	MG11	<input type="radio"/>	-	<input type="radio"/>	-	-
	Blue	MG02	<input type="radio"/>	-	<input type="radio"/>	-	-
	Apricot	MG76	<input type="radio"/>	-	<input type="radio"/>	-	-
	Mint	MG84	<input type="radio"/>	-	<input type="radio"/>	-	-
Synthetic leather Magic ESD	Black	MG01	-	<input type="radio"/>	-	<input type="radio"/>	<input type="radio"/>
	Light beige	MG05	<input type="radio"/>	-	<input type="radio"/>	-	-
Plastic base	Black	217	<input checked="" type="radio"/>	-	-	-	-
Aluminium base	Polished	521	-	<input checked="" type="radio"/>	<input checked="" type="radio"/>	<input checked="" type="radio"/>	<input checked="" type="radio"/>
3D seating dynamics	-	-	<input checked="" type="radio"/>	<input checked="" type="radio"/>	<input checked="" type="radio"/>	<input checked="" type="radio"/>	<input checked="" type="radio"/>

Standard Option



WolfLabs

Pricing on any accessories shown can be found by keying the part number into the search box on our website.

The specifications listed in this brochure are subject to change by the manufacturer and therefore cannot be guaranteed to be correct. If there are aspects of the specification that must be guaranteed, please provide these to our sales team so that details can be confirmed.

www.wolflabs.co.uk

Tel : 01759 301142

Fax : 01759 301143

sales@wolflabs.co.uk

Please contact us if this literature doesn't answer all your questions.